



## **Rabbit anti Coagulation Factor VIII (Cleaved form, C-Term) Polyclonal Antibody**

**Alternative Name(s): FVIII; F8**

### **Order Information**

- **Description:** Coagulation Factor VIII (Cleaved form, C-Term)
- **Catalogue:** 601-970
- **Lot:** See label
- **Size:** 100ug/200ul
- **Host:** Rabbit
- **Clone:** nan
- **Application:** IHC(P), WB
- **Reactivity:** Hu

### **ANTIGEN PREPARATION**

A synthetic peptide corresponding to C-term of the cleavage form around sequence EITRTTLQS of human FVIII protein. It also identical to mouse, chicken origin.

### **BACKGROUND**

The Coagulation Factor VIII (FVIII) is a glycoprotein essential for the intrinsic pathway of blood coagulation. A mature form of FVIII is a single-chain, 2351 amino acid polypeptide with a MW 265kDa. The FVIII can be activated by proteolytic cleavage intracellularly into a two-chain heterodimer, a heavy-chain and light-chain. The development of anti-factor VIII (FVIII) antibodies is currently one of the most serious complications in the treatment of haemophilia A patients due to the nature and properties of anti-FVIII antibodies, their mechanism of action, their neutralization by anti-idiotypic antibodies, and the role of T cells in FVIII inhibitor formation.

### **PURIFICATION**

The Rabbit IgG is purified by Epitope Affinity Purification

### **FORMULATION**

This affinity purified antibody is supplied in sterile Phosphatebuffered saline (pH7.2) containing antibody stabilizer

### **SPECIFICITY**

This antibody recognizes ~80 kDa and 265 kDa of human coagulation Factor VIII protein. The other species are not tested

### **STORAGE**

The antibodies are stable for 24 months from date of receipt when stored at -20oC to -70oC. The antibodies can be stored at 2oC-8oC for three month without detectable loss of activity. Avoid repeated freezing-thawing cycles.

### **APPLICATIONS/SUGGESTED WORKING DILUTIONS\***

- Western Blot: 0.1-1 µg/ml
- ELISA: 0.01-0.1 µg/ml
- Immunoprecipitation: 2-5 µg/ml
- IHC: 2-10 µg/ml
- Flow cytometry: Not tested
- Molecular Weight: 200&80
- Positive Control: Kidney Tissue
- Cellular Location: Cell Membrane

\*Optimal dilutions should be determined by researchers for the specific applications.

### **FOR RESEARCH USE ONLY.**

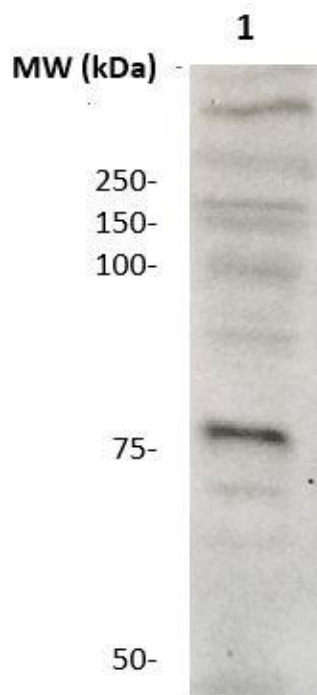
AbboMax, Inc 2528 Qume Drive, Suite 8, San Jose, California 95131, USA  
1 408-573-1898 (Tel). 1 408-573-1858 (Fax). [www.abbomax.com](http://www.abbomax.com) [info@abbomax.com](mailto:info@abbomax.com)



**FOR RESEARCH USE ONLY.**

AbboMax, Inc 2528 Qume Drive, Suite 8, San Jose, California 95131, USA  
1 408-573-1898 (Tel). 1 408-573-1858 (Fax). [www.abbomax.com](http://www.abbomax.com) [info@abbomax.com](mailto:info@abbomax.com)

## DATA ATTACHMENTS



Western Blot: The whole lysate derived from Hepatocyte tissue (20 ug/lane) immunoblotted by Rabbit anti – FVIII (CT) antibody (Cat# 601-970) at 1:1000. Observed a major immunoreactive band at molecular weight ~80 kDa.

## REFERENCES

### FOR RESEARCH USE ONLY.

AbboMax, Inc 2528 Qume Drive, Suite 8, San Jose, California 95131, USA  
1 408-573-1898 (Tel). 1 408-573-1858 (Fax). [www.abbomax.com](http://www.abbomax.com) [info@abbomax.com](mailto:info@abbomax.com)